

# Missouri's Public Health Volunteer Program

# Statewide Vision and Mission

- To create a seamless statewide system, for managing public health volunteers
  - Well integrated with volunteer networks
  - Consistent training for all hazards
- To develop an infrastructure of policy, training, and database for a local and state public health volunteer system

# Public Health Volunteer System

- Advisory committee for guidance
- Medical Reserve Corps (MRC) program and state coordinator
- Show-Me Response program and state coordinator
- Policies and procedures
- Training recommendations
- Volunteer coordinators
- Local Public Health Agencies (LPHAs)

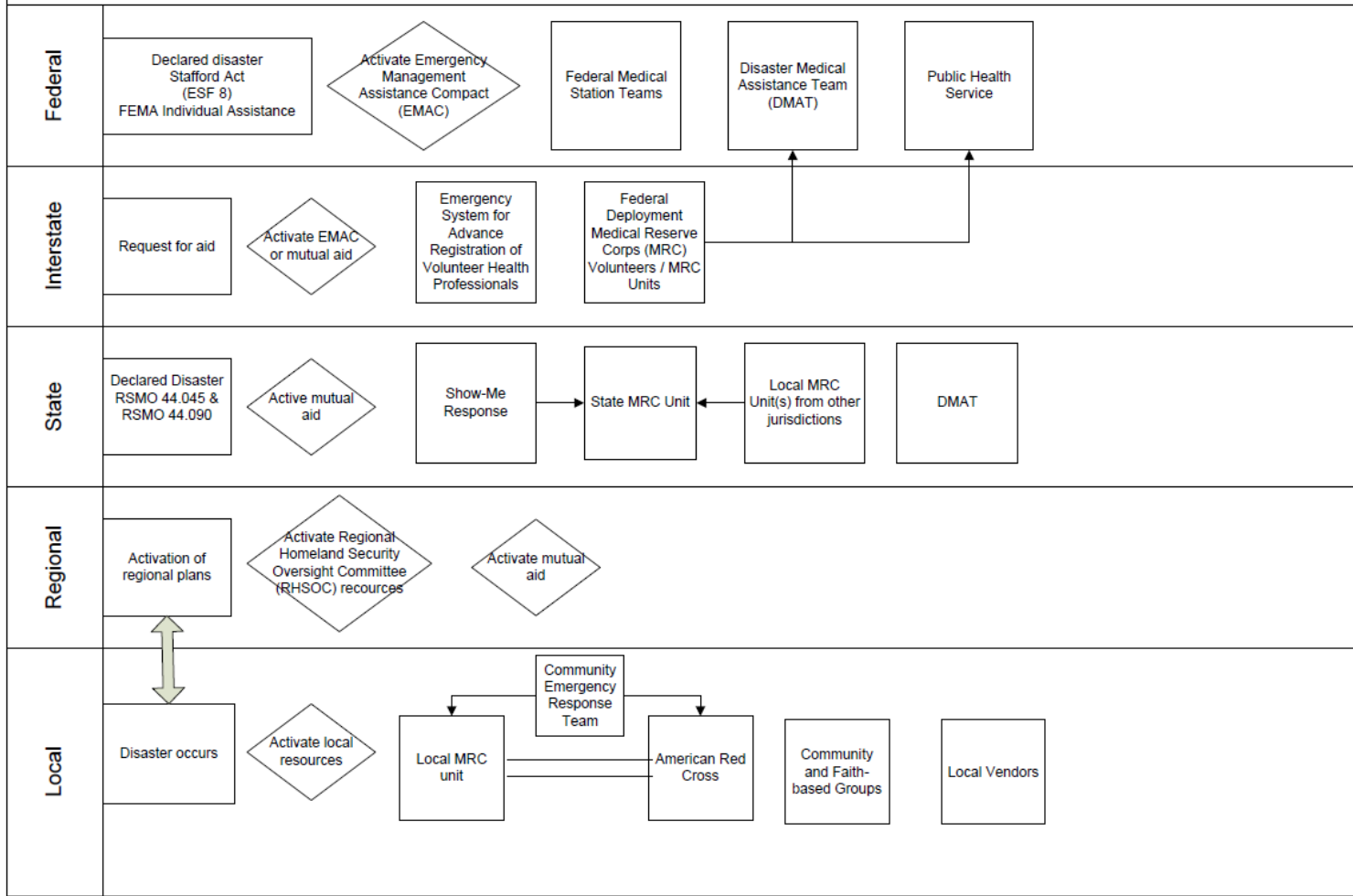
# MRC

- There are 29 in Missouri
- Majority are housed with LPHAs
- Most have as mission to “assist with public health emergencies”
  - Mass vaccination
  - Shelters
  - Triage
  - Search and Rescue

# MRC

- Missouri State MRC unit
  - Shelter teams
- Missouri Volunteer Veterinary Corps
  - Animal disease emergencies
  - Natural disasters impacting animals

# Volunteer Staffing Request Process – Medical Reserve Corps Shelter Teams





**SHOW-ME**  
***RESPONSE***

***ShowMeResponse.org***

**Registry of Volunteer  
Healthcare Professionals**

# The Benefits of Show-Me Response

- Collects and checks volunteer identification, licensing, credentials, and skill sets
- Volunteer information is secure and protected for privacy
- Volunteers can choose the type/level of participation

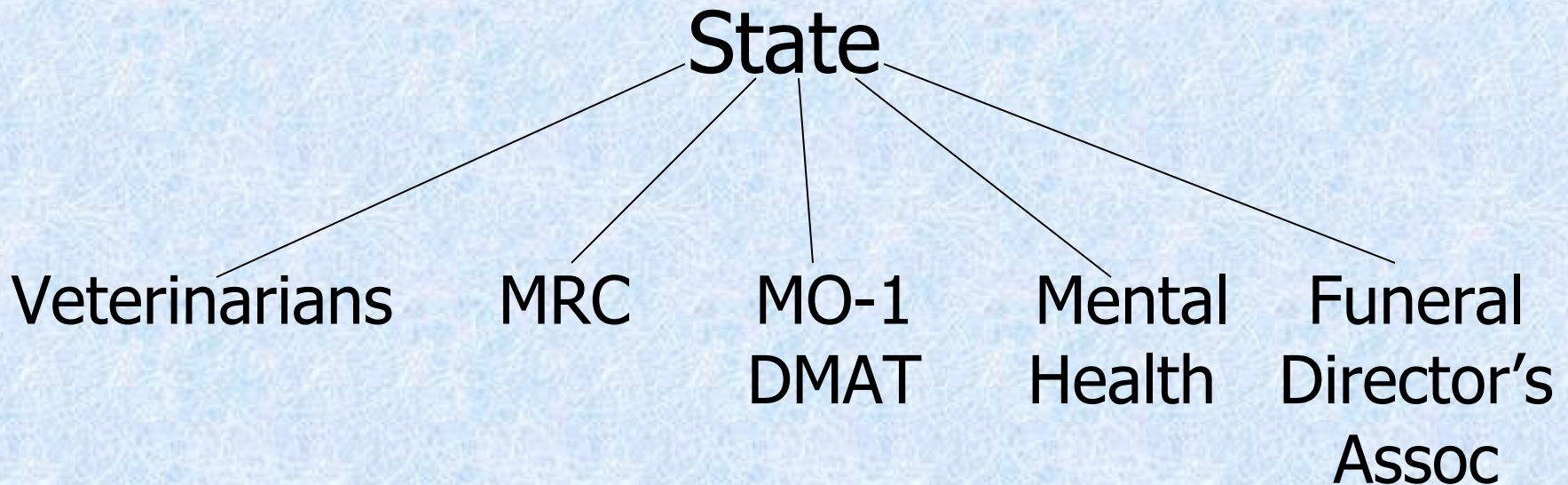


# Registry Features

- Web-based registration
- Checks credentials
- Missions
- Communication
- Track responses
- Outcome reports



# Volunteer Management Groups



- Organized by teams



[www.showmeresponse.org](http://www.showmeresponse.org)



Disasters call for heroes...

Answer the Call

[Home](#)

[Register Now](#)

[Contact Us](#)

[FAQ](#)

[Paper Registration](#)

[Forms](#)

[Recommended Training](#)

**Welcome to Show-Me Response, the online registration system for volunteer health professionals.**

This site is operated by the Missouri Department of Health and Senior Services and allows you to register as a volunteer willing to provide services during a disaster or emergency situation. The registration system will collect basic information about you and your professional skills such as your license number, expiration date, certifications, and contact information. Please click on the [Register Now](#) button below to begin the registration process. If you have already completed the registration process or wish to return to an in-progress registration, please sign-in using the log in area on this page.

To register, you must be a Missouri resident and/or have a license in good standing with the Missouri Division of Professional Registration. Please click on the Register Now button below to begin the registration process. If you have already completed the registration process or wish to return to an in-progress registration, please sign-in using the log in area on this page.

**All information you provide is held under the highest degree of care and standards of security, confidentiality, and privacy. You may review the system's [privacy policy](#).**

Upon registration, your credentials will be checked. All reasonable efforts, in accordance with the federal guidelines for Emergency System for Advance Registration of Volunteer Health Professionals (ESAR-VHP), have been made to ascertain the credentials of individuals interested in becoming a volunteer.

During a state or national disaster, this system may receive requests for potential volunteers. If a decision is made to request your services as a volunteer, you will be contacted at that time through an automated system and asked about your availability. You can choose, at any time, to decline any request for activation.

The Missouri Department of Health and Senior Services would like to thank you for registering as a Missouri Show-Me Response volunteer.

Username:

Password:

Log In

[Forgot Username or Password?](#)

[Not Registered?](#)



**REGISTER NOW**

## Registration

### Affiliation

Welcome to Missouri Show-Me Response (training). We're glad you could take the time to register to volunteer during an emergency. Please read the following directions and then click on the Next button below to continue. For additional assistance, please review the [Volunteer Guide](#).

- ① For the best experience, do not use the refresh, stop, back or forward buttons on the browser and only single-click buttons within a page.
- ② An asterisk (\*) indicates a required field. You will be alerted if the required information has not been entered.
- ③ For your security, all communications are encrypted and you will be logged out automatically if you are inactive for more than 30 minutes.
- ④ We recommend Microsoft Internet Explorer 7.0 or later and Mozilla Firefox 3.0 or later with JavaScript enabled and pop-up blocker turned off to use this site. Please see your browser's help file for more information.

If you are a member of more than one organization listed, please choose the organization you will volunteer with during a disaster. If you are not a member with any listed organization, you may choose to join one organization at this time.

Organization

### Registration

#### Affiliation

Welcome to Missouri Show-Me Response. We're glad you could take the time to register to volunteer during an emergency. Please read the following directions and then click on the Next button below to continue. For additional assistance, please review the [Volunteer Guide](#).

- 1 For the best experience, do not use the refresh, stop, back or forward buttons on the browser and only single-click buttons within a page.
- 2 An asterisk (\*) indicates a required field. You will be alerted if the required information has not been entered.
- 3 For your security, all communications are encrypted and you will be logged out automatically if you are inactive for more than 30 minutes.
- 4 We recommend Microsoft Internet Explorer 7.0 or later and Mozilla Firefox 3.0 or later with JavaScript enabled and pop-up blocker turned off to use this site. Please see your browser's help file for more information.

If you are a member of more than one organization listed, please choose the organization you will volunteer with during a disaster. If you are not a member with any listed organization, you may choose to join one organization at this time.

Organization

- Select
- DMH
- MRC
- No Affiliation
- Veterinarian

Add Additional Unit Affiliation

Previous

Next

## Training

HELP ?

### Training Courses

Please indicate whether you have completed any of the following training courses. Once registration is complete, log in to upload your training certificates.

Training Course:

- Select
- Select
- Animals in Disaster, Modules A and B, Federal Emergency Management Agency
- Basic First Aid
- Cardiopulmonary Resuscitation (CPR)
- Community Emergency Response Team
- Handling Emotions Under Pressure
- Health Insurance Portability and Accountability Act Training (HIPAA)
- ICS 100
- ICS 200
- ICS 300
- ICS 400
- ICS 700
- ICS 800
- MOHSAIC, MO Dept of Health and Senior Services
- Psychological First Aid, MO Dept of Mental Health
- Red Cross Shelter Operations
- Shelter Training, American Red Cross
- Small Business Continuity Planning
- Strategic National Stockpile CORE Staging
- Strategic National Stockpile Officer
- Strategic National Stockpile Orientation

Add Another Course

Previous

Next



MISSOURI DEPARTMENT OF HEALTH AND SENIOR SERVICES  
 CENTER FOR EMERGENCY RESPONSE AND TERRORISM (CERT)  
**SHOW-ME RESPONSE VOLUNTEER REQUEST**

DIRECT 1-800-392-0272  
 FAX (573) 528-8389

FORM COMPLETED BY		DATE	TIME
<b>REQUESTING ENTITY/LOCATION INFORMATION</b>			
CONTACT PERSON(S)		AGENCY/FACILITY NAME	
ADDRESS			
TELEPHONE NUMBER(S)		E-MAIL	
OTHER CONTACT INFORMATION			
<b>HOSPITALS ONLY</b>			
PREPAREDNESS PLAN ACTIVATED?		HAS MUTUAL AID AGREEMENT BEEN PURSUED?	
<b>LOCAL EMERGENCY OPERATION CENTER PERSON/AUTHORITY APPROVING REQUEST</b>			
*All requests for volunteers should be made through local emergency operation center.			
NAME		COUNTY	
TELEPHONE NUMBER(S)		E-MAIL	
<b>RELEVANT INFORMATION ABOUT INCIDENT</b>			
LOCATION		CONDITIONS <input type="checkbox"/> NORMAL <input type="checkbox"/> LIMITED <input type="checkbox"/> PRIMITIVE	
DESCRIPTION			
<b>VOLUNTEER ASSIGNMENT/DUTIES AND SHIFT NEEDS</b>			
<b>NOTE: It is the responsibility of the Requestor to ensure volunteers meet local requirements for background checks.</b>			
HEALTHCARE PROFESSIONALS LICENSES AND/OR CERTIFICATIONS	CLINIC STATUS (Y OR N)	HOSPITAL STATUS (Y OR N)	NUMBER REQUESTED
NON-MEDICAL VOLUNTEERS			
TOTAL NUMBER OF VOLUNTEERS REQUESTED ▶			
APPROXIMATE DATE(S) OF SERVICE			
Requesting Entity (contact person) will keep the Show-Me Response state system coordinator on duty advised regarding volunteer status, e.g., arrivals and demobilization (1-800-392-0272).			
<b>VOLUNTEER LOGISTICAL AND BASIC NEEDS INFORMATION</b>			
Check-in Location & Contact			
Transportation/Mileage Reimbursed	<input type="checkbox"/> Yes <input type="checkbox"/> No		
Lodging/Meals Provided	<input type="checkbox"/> Yes <input type="checkbox"/> No		
Hygiene/Toiletries Available	<input type="checkbox"/> Yes <input type="checkbox"/> No		
Environmental/Health Protections	<input type="checkbox"/> Yes <input type="checkbox"/> No		
Other			



## Mission Manager



### All Missions

#### 1. [Mission: Autumn Charge Exercise](#)

[Deployment Groups](#) | [Mission Roster](#) | [Mission Details](#)

#### 2. [Deployment Group: registered nurses](#)

[Responder Requests](#) | [Deployment Roster](#) | [Deployment Group Details](#)

↳ 50 Volunteers requested for mission - 69 Volunteers rostered

[Create Responder Request](#) | [Create Another Deployment Group](#)

### Responder Requests

Sort By Title <input type="text"/>	Display Filter Status: All <input type="text"/>	<a href="#">Change Filter Settings</a>
---------------------------------------	--	--

1-1 of 1

[RN](#) (details)

Location: Multiple hospitals across the state

Request Filled

Request Created: 09/09/2010

**69 Staffed - 0 Needed**

Sharlet Kern Howren  
MRC/Volunteer Program Coordinator  
MO Department of Health and Senior  
Services

930 Wildwood Dr.

Jefferson City, MO 65109

573-522-4098

[Sharlet.Howren@dhss.mo.gov](mailto:Sharlet.Howren@dhss.mo.gov)